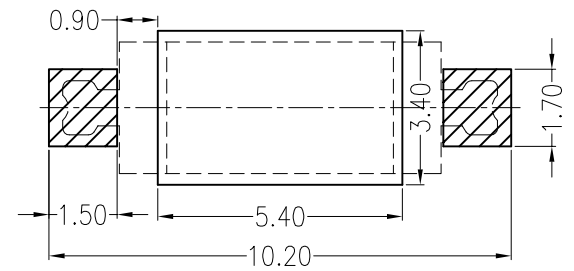
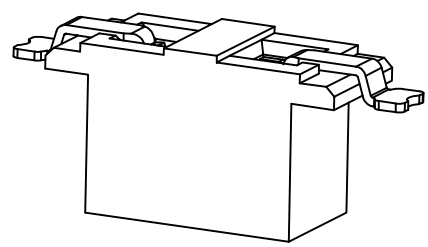
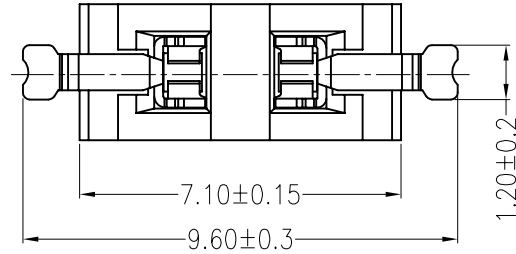
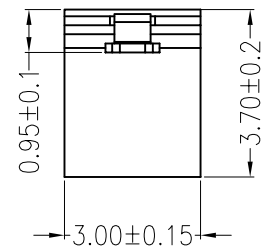
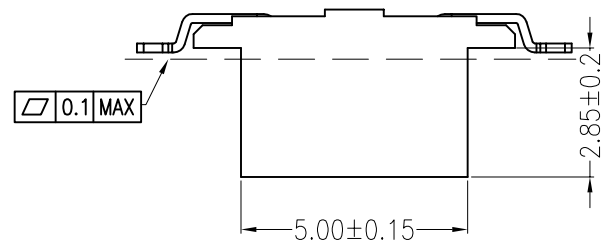


A B C D

REV	DESCRIPTION	DESIGN	DATE
A0	Release	吴丹平	2016.04.30



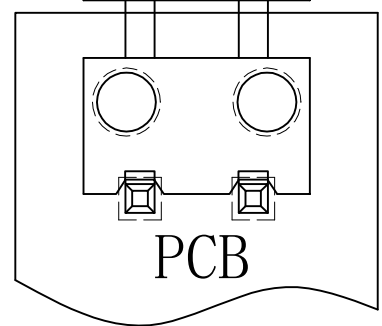
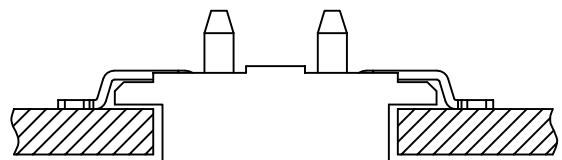
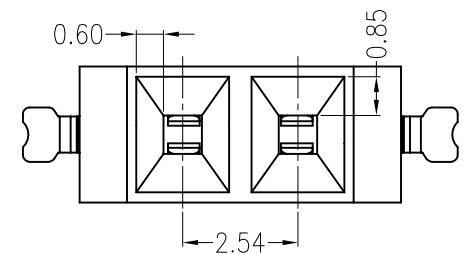
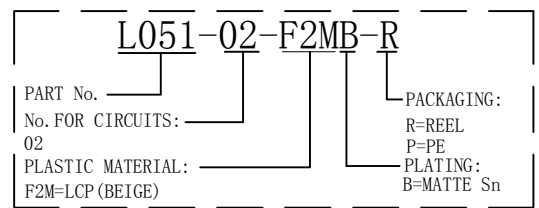
Board Layout
General Tolerance: ±0.05



主要技术参数 Main Specifications

- 线数 (Poles): 02
- 接触电阻 (Contact resistance): ≤20mΩ
- 绝缘电阻 (Insulation resistance): ≥1000MΩ
- 额定电压 (Rated voltage): 125V AC DC
- 额定电流 (Rated current): 1.0A AC DC
- 耐电压 (Withstand Voltage): 1500V AC/minute
- 温度范围 (Temperature Range): -40°C ~ +120°C

ORDER INFORMATION:



PCB
Assembly Layout

ITEM	COMPONENT	Q'TY	MATERIAL	FINISH
C				
B	CONTACT	2 PCS	PhosphorBronze	MATTE Sn-plated
A	PEDESTAL	1 PCS	LCP	UL 94V-0, COLOR:BEIGE

JKUN 温州健坤接插件有限公司 WENZHOU JKUN CONNECTOR CO., LTD.			TITLE: - 2.54mmPITCH 180°WAFER SMT TYPE	
X.±0.5	X.±5'	USE: CUSTOMER	PART NO.:	
.X±0.3	.X±2'		L051-02-F2MB-R	
.XX±0.25	.XX±1'	APPD: 邵敬和	DWG NO.:	
--	--	CHKD: 田峰	JKUN/GCCP-0167	
⊕	◁	UNITS: mm	DR: 周秀龙	SCALE: 1:1
				SHEET: 1/1

A B C D E F

1
2
3
4
5

1
2
3
4